

GD[®] QINGDAO GOLD-DRAGON CO.,LTD

PETER TIAN

Managing Director

Add: RM1621, north building, no.63 haier road, qingdao china

Tel: 0086-532-80999608 80999626 80999627

Fax: 0086-532-80999609

Mobile: 0086-013708996523

E-mail: twmly@vip.163.com

sales@cngold-dragon.com

Http://www.cngold-dragon.com

QINGDAO GOLD-DRAGON CO.,LTD

RUBBER PRODUCTS



QINGDAO GOLD-DRAGON CO.,LTD

Add: RM1621, B(north) building, No.63 Haier road, Qingdao,China

Tel: 0086-532-80999608 80999626 80999627 80999629

Fax:0086-532-80999609 Mobile:0086-013708996523

E-mail:twmly@vip.163.com sales@cngold-dragon.com

HTTP://www.cngold-dragon.com



QINGDAO GOLD-DRAGON CO.,LTD

BRIEF Introduction

QINGDAO GOLD-DRAGON CO. LTD. IS ONE OF LEADING PRODUCER AND EXPORTERS IN CHINA FOR PVC PRODUCTS . WE HAVE OUR OWN FACTORY - HEBEI GOLD-DRAGON RUBBER PRODUCT MFG.

OUR RUBBER PRODUCT MAINLY INCLUDING

RUBBER SHEET:

SBR, NBR, CR, EPDM

SILICONE RUBBER SHEET

DIAMOND RUBBER SHEET

HORSE MAT

SKIRT-BOARD

DRAINAGE MAT ETC...

RUBBER HOSE:

RUBBER AIR HOSE WITH FITTINGS

RUBBER AIR HOSE WITHOUT FITTINGS

RUBBER GAS HOSE

RUBBER WATER HOSE

RUBBER OIL HOSE

RUBBER SUCTION HOSE

RUBBER HYDRAULIC HOSE ETC...



SINCE BUILT FROM 1990S, WE LEARNED GOOD SKILL TO COOPERATE WITH OUR CUSTOMERS FROM DIFFERENT MARKETS.

BASED ON THE PRINCIPLE OF "SUITABLE QUALITY, HIGH SERVICE, AND HIGH EFFICIENCY", WE DO HOPE TO BUILD BUSINESS RELATION WITH YOU TO ACHIEVE THE MUTUAL BENEFIT.

[Http://www.cngold-dragon.com](http://www.cngold-dragon.com)

HEBEI GOLD-DRAGON RUBBER PRODUCT MFG.



RUBBER SHEET

SBR RUBBER SHEET

SPECIFICATION:

WIDTH: 100--2000MM

LENGTH: AS PER BUYER'S REQUEST

THICKNESS: 1MM-30MM

DENSITY: 1.5-1.8

TENSILE STRENGTH: 2MPA - 4MPA

WORKING TEMPERATURE: FROM -15℃ TO +60℃

ELONGATION: 200-280%

HARDNESS: 65±5 SHORE A

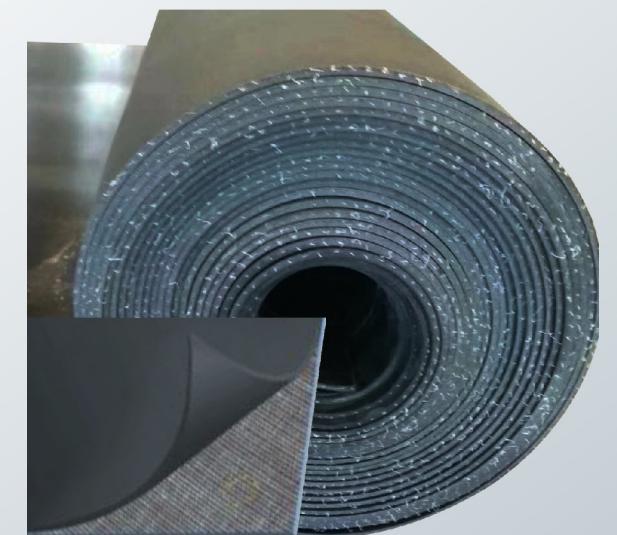


CHARACTERISTIC : SBR IS TOUGH AND RESILIENT SYNTHETIC RUBBER MATERIAL. IT IS SO DURABLE THAT IT IS A COMMON RUBBER MATERIAL, HIGHLY RESISTANT TO DAMAGING OUTDOOR FACTORS, INCLUDING UV RAYS AND OZONE, ALLOWING IT TO BE AN EXCELLENT INDOOR/OUTDOOR RUBBER.

USAGE : USED IN THE WORKSHOP, OUTDOOR PLACE, PRODUCTION OF VEHICLE TIRES.



SBR WITHOUT INSERT



SBR WITH INSERT

RUBBER SHEET

SPECIFICATION:

WIDTH: 100--2000MM

LENGTH: AS PER BUYER'S REQUEST

THICKNESS: 1MM-30MM

DENSITY: 1.4-1.5

TENSILE STRENGTH: 3MPA - 5MPA

WORKING TEMPERATURE: FROM -30℃

TO +100℃

ELONGATION: 200-280%

HARDNESS: 65±5 SHORE A



NBR RUBBER SHEET

CHARACTERISTIC : WELL TIGHTNESS, OIL-RESISTING, FLAME RETARDED, WEAR-RESISTING, WATER-RESISTING, WELL STICKNESS

USAGE: WIDELY USED FOR EXCELLENT OIL-PROOF SEAL, WASHER AND AS THE MATERIAL FOR WORKING TABLE IN THE ENVIRONMENT OF GROUND WHICH REQUIRE OIL-PROOF, WORKING TABLE AND DEFEND OIL CAR, SHIP, MACHINE PROCESS.

EPDM RUBBER SHEET

CHARACTERISTIC: OIL-RESISTING, AGING-RESISTING, OZONE-RESISTING, HEAT-RESISTING, GOOD CHEMICAL STABILITY

USAGE: WIDELY USED FOR THE RUBBER CONSTRUCT WATERPROOF TO THE BRIDGE PROJECT, HIGH REQUIRED RUBBER WASHER, SEALING RING AND ETC.

CR RUBBER SHEET

CHARACTERISTIC : OIL-RESISTING, FLAME RETARDED, HEAT-RESISTING,

USAGE: EXCELLENT SEALED-UP, DAMPING USED IN OIL MATERIAL (SUCH AS MACHINE OIL, DIESEL OIL LUBRICATING OIL AND GASOLINE) AND USED TO PUNCH ALL KINDS OF OIL-PROOF SEAL. AND AS THE MATERIAL FOR WORKING TABLE IN THE ENVIRONMENT OF GROUND WHICH REQUIRE OIL-PROOF ELECTRONIC INDUSTRY.

RUBBER SHEET

COLOURFUL RUBBER SHEET

CHARACTERISTIC: COLOURFUL RUBBER SHEET IS TOUGH AND RESILIENT SYNTHETIC RUBBER MATERIAL. IT IS SO DURABLE THAT IT IS A COMMON RUBBER MATERIAL, HIGHLY RESISTANT TO DAMAGING OUTDOOR FACTORS, INCLUDING UV RAYS AND OZONE, ALLOWING IT TO BE AN EXCELLENT INDOOR/OUTDOOR RUBBER.



NATURAL RUBBER SHEET

DENSITY: 1.05-1.2

TENSILE STRENGTH: 22-24MPA

ELONGATION: 600-700%

HARDNESS: 38-40 SHORE A

CHARACTERISTIC: HAS OUTSTANDING RESILIENCE, STRENGTH AND RESISTANCE TO ABRASION, TEARING AND CUTTING. THE SHEETING IS MADE FROM PURE NATURAL RUBBER WHICH GIVES IT A HIGH ELASTICITY AND NON-TOXIC PROPERTY.



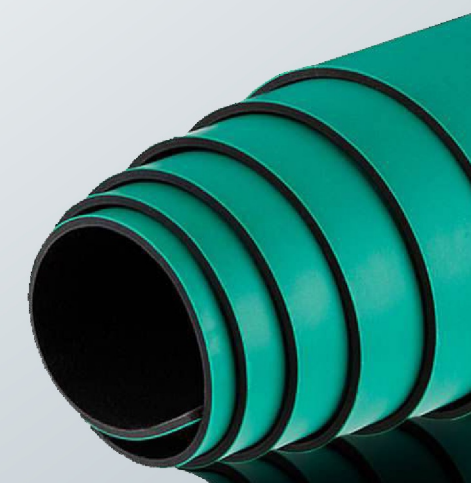
ANTI STATIC RUBBER SHEET

	A Grade	C Grade
Density	1.5	1.7
Tensile strength	3MPA	3MPA
Elongation	200%	150%
Hardness	65±5	70±5

TOP GREEN LAYER: NBR + NR (THICKNESS: 0.4MM)

SURFACE RESISTANCE: 10⁵ -109⁹Ω

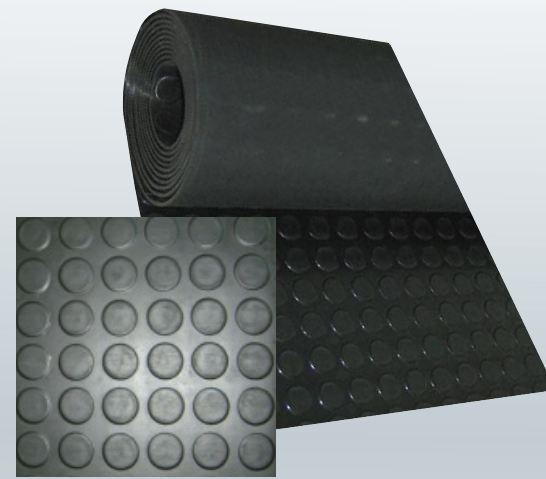
CHARACTERISTIC: GOOD ANTIAGING, OZONE PROOF, POLAR LIQUID RESISTANT



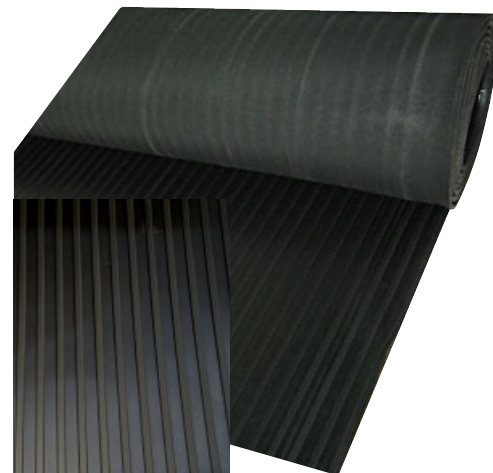
RUBBER SHEET

SPECIFICATION:

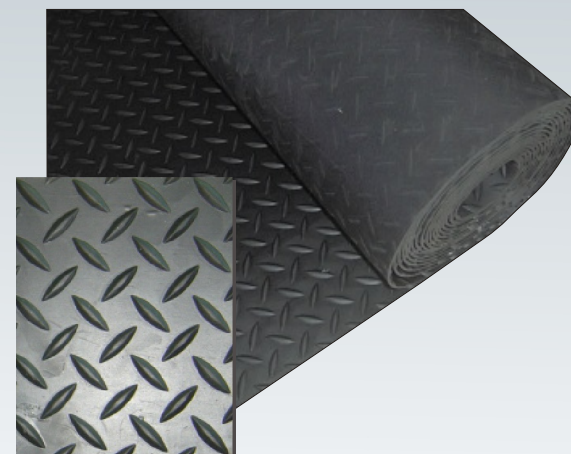
WIDTH: 1.0MTR, 1.2MTR, 1.4MTR, 1.5MTR
 LENGTH: 10MTRS, 15MTRS, 20MTRS
 THICKNESS: 3-20MM
 DENSITY: 1.5
 TENSILE STRENGTH: 3MPA - 5MPA
 WORKING TEMPERATURE: FROM -15°C TO +60°C
 ELONGATION: 200-280%
 HARDNESS: 65±5 SHORE A



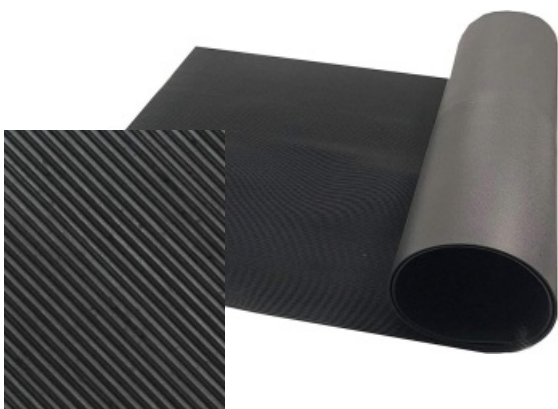
STUDED RUBBER SHEET



WIDE RIBBED RUBBER SHEET



DIAMOND RUBBER SHEET

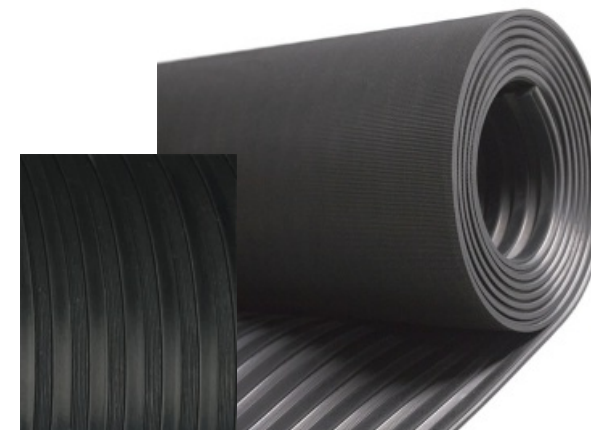


FINE RIBBED RUBBER SHEET



CHECKER RUBBER SHEET

RUBBER SHEET



AMERICA RUBBER SHEET



MILLET RUBBER SHEET



COLOURFUL PATTERN RUBBER SHEET

SPECIFICATION:

WIDTH: 100--2000MM
 LENGTH: AS PER BUYER'S REQUEST
 THICKNESS: 1MM-30MM
 DENSITY: 1.6-1.85
 TENSILE STRENGTH: 2MPA - 4MPA
 WORKING TEMPERATURE: FROM -15°C TO +60°C
 ELONGATION: 200-280%
 HARDNESS: 65±5 SHORE A

USAGE: APPLY TO THE MANUFACTURE OF BUFFER RING AND SEALS
 WITH MEDIUM QUALITY.

RUBBER SHEET

SPECIFICATION:

THIS MAT IS IDEAL FOR OUTDOOR ENTRANCEWAYS WITH MEDIUM TRAFFIC THE FLEXIBLE "FINGER-TIPS" EFFECTIVELY SCRAPE DIRT AND MOISTURE OFF SHOES HUNDERS OF FLEXIBLE RUBBER NODULES EFFECTIVELY BRUSH DIRT, MUD, SNOW AND SAND FROM SHOES.

■ Popular sizes Weight kg/pc

800MM X 600MM X 15MM	6.5
800MM X 1000MM X 15MM	11.5
900MM X 1800MM X 15MM	21
910MM X 1510MM X 12.7MM	10
920MM X 1840MM X 12.7MM	12.5

SPECIFICATION:

DENSITY: 1.4 - 1.5

TENSILE STRENGTH: 3MPA - 4MPA

WORKING TEMPERATURE: FROM -15℃ TO +60℃

ELONGATION: 200-280%

HARDNESS: 65±5 SHORE A

■ Popular sizes:

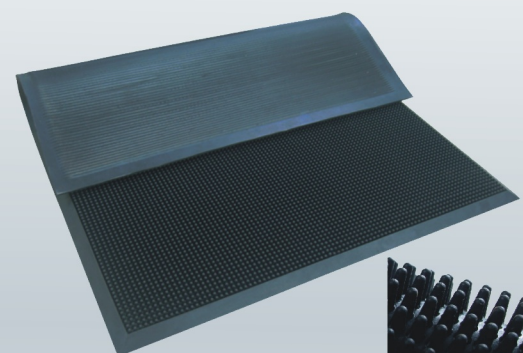
1/4"x3"	3/8"x3"	1/2"x4"	3/4"x3"	1"x6"
1/4"x4"	3/8"x4"	1/2"x5"	3/4"x6"	1"x8"
1/4"x5"	3/8"x5"	1/2"x6"	3/4"x8"	1"x10"
1/4"x6"	3/8"x6"	1/2"x8"	3/4"x10"	1"x12"
1/4"x8"	3/8"x8"	1/2"x10"		1-1/2"x10"
1/4"x10"	3/8"x10"	1/2"x12"		
1/4"x12"	3/8"x12"			

POPULAR LENGTH: 50 FEET PER ROLL

OTHER SIZE: WE CAN PRODUCE AS PER BUYER'S REQUEST

■ Popular sizes: 3' X 3' X 5/8"

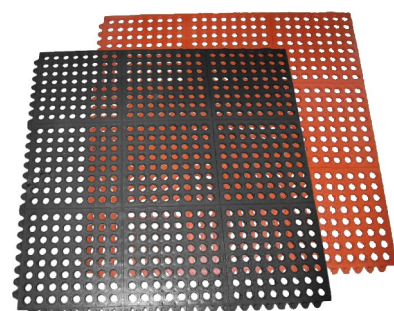
FINGERTIP ENTRANCE MAT



SKIRT- BOARD



DRAINAGE SHEET



HEBEI GOLD-DRAGON RUBBER PRODUCT MFG.

RUBBER SHEET

STALL MAT



1> DOT SURFACE

THICKNESS: 12MM/15MM/17MM

WIDTH: 1.22M/1M

LENGTH: 1.83M/2M

DENSITY: 1.35

TENSILE STRENGTH: 2.5MPA

ELONGATION: 150%

HARDNESS: 65±5 SHORE A

2> HONEYCOMB SURFACE

THICKNESS: 8MM-20MM

WIDTH: 1M-2M

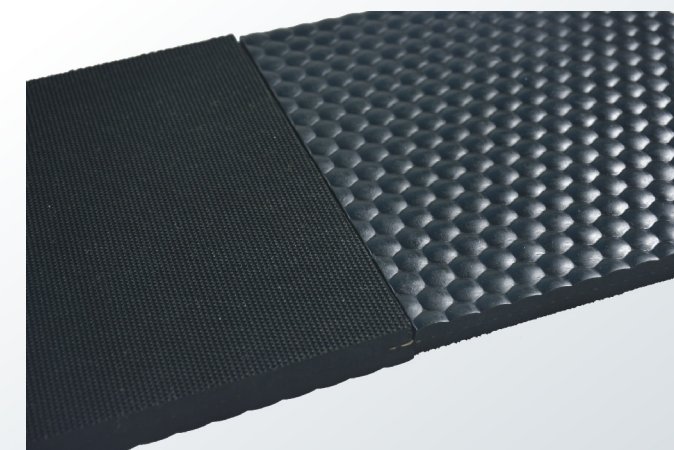
LENGTH: 10M-20M

DENSITY: 1.45-1.5

TENSILE STRENGTH: 3-5MPA

ELONGATION: 200%

HARDNESS: 65±5 SHORE A



3> "I" PATTERN SURFACE

THICKNESS: 12MM/17MM

WIDTH: 1.22M

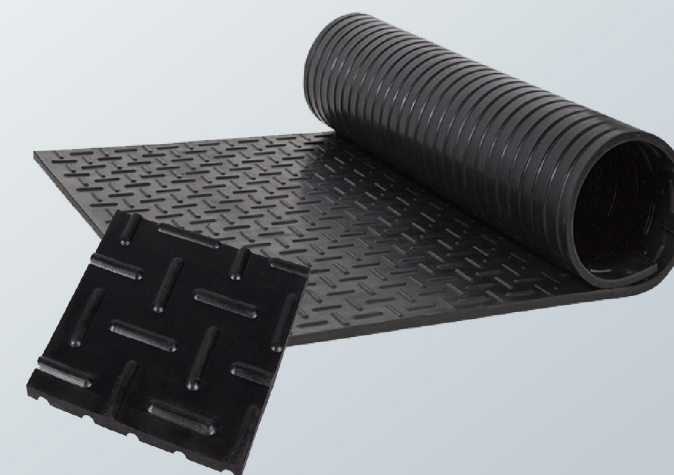
LENGTH: 1.83M

DENSITY: 1.35

TENSILE STRENGTH: 2.5MPA

ELONGATION: 150%

HARDNESS: 65±5 SHORE A



RUBBER AIR HOSE

SPECIFICATION:

APPLICATION: WIDE RANG SERVICE IN GENERAL INDUSTRIAL, MOBILES SHOP PNEUMATIC TOOLS, AIR TOOLS ETC

INNER TUBE: SBR BLENDED, BLACK COLOR, SMOOTH

REINFORCEMENT: HIGH TENSILE STRENGTH SYNTHETIC YARN

COVER: EPDM/SBR BLENDED, WEATHER AND OZONE RESISTANT

TEMPERATURE: -20℃ TO + 60℃

COLOR: BLACK, RED, BLUE, GREEN ETC

SURFACE: SMOOTH

LENGTH: 25MTR, 50MTR, 100MTR OR AS PER BUYER'S REQUEST

PACKAGE: AS PER BUYER'S REQUEST

Popular sizes:

I.D. INCH	I.D. MM	O.D. MM	W.P./B.P. BAR
1/4"	6.3	12	20/60
5/16"	8	15	20/60
3/8"	9.5	17	20/60
1/2"	13	21	20/60
5/8"	16	24	20/60
3/4"	19	27	20/60
1"	25	34	20/60
1-1/4"	32	42	20/60
1-1/2"	38	48	20/60
2"	51	63	20/60



RUBBER AIR HOSE ASSEMBLIES WITH 4" BEND RESTRICTORS ON EACH SIDE

SPECIFICATION:

CONSTRUCTION: PREMIUM RED RUBBER EPDM.

FEATURES: HOSE HAS AN EXCELLENT TEMPERATURE RANGE WITH RESISTANCE TO HEAT, OZONE, ABRASION AND STAYS FLEXIBLE AT LOW TEMPERATURES. BEND RESTRICTORS PROLONG THE SERVICE LIFE OF THE HOSE.

COUPLED: BRASS MALE PIPE THREAD ON EACH END.

PACKAGED: POINT OF PURCHASE PACKAGING FOR CONVENIENT RETAIL SALE.



Popular sizes:

1/4" x 25' with 1/4" MPT brass coupling
1/4" x 50' with 1/4" MPT brass coupling
3/8" x 25' with 1/4" MPT brass coupling
3/8" x 50' with 1/4" MPT brass coupling
1/2" x 25' with 1/2" MPT brass coupling
1/2" x 50' with 1/2" MPT brass coupling

RUBBER AIR HOSE

RUBBER AIR HOSE ASSEMBLY JACKHAMMER

SPECIFICATION:

APPLICATION: ACCORDING TO THE REQUIREMENTS OF USING PLACES, THE APPROPRIATE MATCHING JOINTS ARE AVAILABLE TO FACILITATE WORK

INNER TUBE: SBR & EPDM BLENDED

REINFORCEMENT: HIGH TENSILE STRENGTH SYNTHETIC YARN

COVER: EPDM/SBR BLENDED, WEATHER AND OZONE RESISTANT

TEMPERATURE: -20℃ TO + 60℃

COLOR: RED, YELLOW OR AS PER BUYER'S REQUEST

SURFACE: SMOOTH

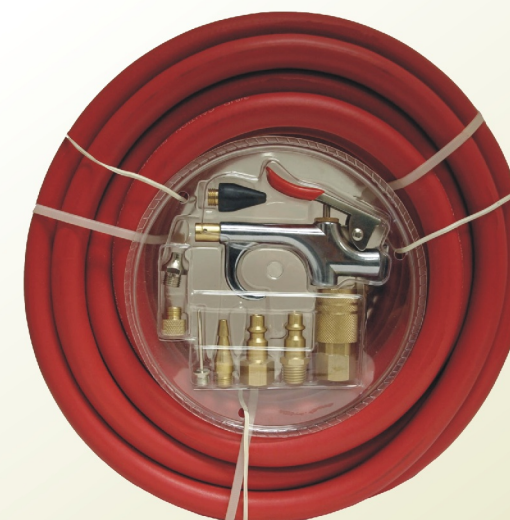
PACKAGE: CARTON OR PALLET, OR AS PER BUYER'S REQUEST

Popular sizes:

Specification	Braided	I.D./mm	O.D./mm	W.P./psi	B.P./psi
3/4"*50ft	1B	19	29	250	750
1"*50ft	1B	25	36	200	600



RUBBER AIR HOSE WITH ACCESSORY KIT



Popular sizes:

3/8" x 25' with 10 pcs of coupling accessory kit
3/8" x 50' with 10 pcs of coupling accessory kit

RUBBER WATER HOSE

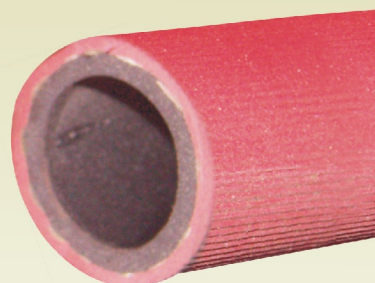
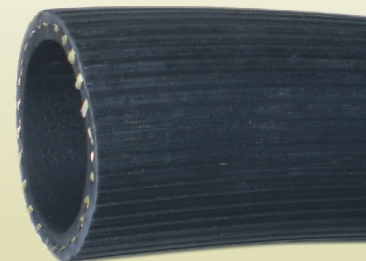
RUBBER WATER HOSE WITH FIBER INSERTION

SPECIFICATION:

APPLICATION: GARDENING OR IRRIGATION
 INNER TUBE: SBR BLENDED, BLACK COLOR, SMOOTH
 REINFORCEMENT: HIGH TENSILE STRENGTH SYNTHETIC YARN
 COVER: EPDM/SBR BLENDED, WEATHER AND OZONE RESISTANT
 TEMPERATURE: -20℃ TO + 60℃
 COLOR: BLACK, RED, BLUE, GREEN ETC
 SURFACE: SMOOTH OR RIBBED
 LENGTH: 25MTR, 50MTR, 100MTR
 PACKAGE: AS PER BUYER'S REQUEST

■ Popular sizes:

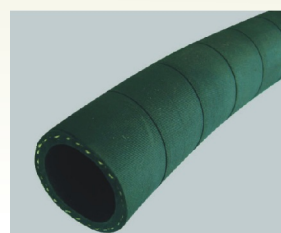
I.D. INCH	I.D. MM	O.D. MM	W.P./B.P. BAR
1/2"	12.7	20	10/30
5/8"	16	23	10/30
3/4"	19	26	10/30
1"	25	33	10/30
1 1/4"	32	40	10/30
1 1/2"	38	47	10/30
2"	50	61	10/30



RUBBER WATER HOSE WITH CLOTH INSERTION

SPECIFICATION:

APPLICATION: GARDENING OR IRRIGATION
 INNER TUBE: SBR BLENDED, BLACK COLOR, SMOOTH
 REINFORCEMENT: SEVERAL LAYERS OF CLOTH
 (FROM 1 LAYER TO 4 LAYERS)
 COVER: EPDM/SBR BLENDED, WEATHER AND OZONE RESISTANT
 TEMPERATURE: -20℃ TO + 60℃
 COLOR: BLACK, RED, BLUE, GREEN ETC
 SURFACE: SMOOTH OR CLOTH
 LENGTH: 18.3MTR, 20MTRS, OR AS PER BUYER'S REQUEST
 PACKAGE: AS PER BUYER'S REQUEST



■ Popular sizes:

I.D. INCH	I.D. MM	I.D. INCH	I.D. MM
1/2"	12.7	2 1/2"	65
5/8"	16	3"	75
3/4"	19	3 1/2"	90
1"	25	4"	100
1 1/4"	32	5"	125
1 1/2"	38	6"	150
2"	50	8"	200

RUBBER WATER HOSE

BLACK RUBBER WATER HOSE ASSEMBLIES

SPECIFICATION:

CONSTRUCTION: 100% RUBBER WITH A 200 PSI WORKING PRESSURE.
 COUPLED: HEAVY DUTY SOLID BRASS MALE GARDEN HOSE THREAD X FEMALE GARDEN HOSE THREAD COUPLINGS WITH ONE BEND RESTRICTOR.
 FEATURES: RESISTS SUNLIGHT, ABRASION, KINKING, AND CRACKING. FLEXIBLE IN FREEZING TEMPERATURES. BEND RESTRICTOR PROMOTES LONGER LIFE. ASSEMBLIES IN OTHER LENGTHS AVAILABLE UPON REQUEST.



■ Popular sizes: 5/8 X 25' 5/8X 50' 5/8X75' 5/8X 100' 3/4X25' 3/4X50' 3/4X75' 3/4X100'

RUBBER OIL HOSE

SPECIFICATION:

APPLICATION: IN FUEL SYSTEM LIKE GASOLINE, ALSO SUITABLE FOR LOADING AND UNLOADING TANK CARS, AUTOMOBILES, OIL REFINE PLANTS OR OIL RELATED INDUSTRIES, ETC.

TUBE: BLACK NBR, SMOOTH SURFACE, OIL-RESISTANT

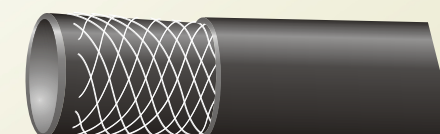
REINFORCEMENT: TEXTILE BRAID HIGH STRENGTH SYNTHETIC YARN

COVER: BLACK NBR, SMOOTH SURFACE

TEMPERATURE: -30℃ TO + 80℃

LENGTH: AS PER BUYER'S REQUEST

PACKAGE: AS PER BUYER'S REQUEST



■ Popular sizes:

I.D. INCH	I.D. MM	O.D. MM	W.P./B.P. BAR
1/4"	6.3	12	20/60
5/16"	8	15	20/60
3/8"	9.5	17	20/60
1/2"	13	21	20/60
5/8"	16	24	20/60
3/4"	19	27	20/60
1"	25	34	20/60
1-1/4"	32	42	20/60
1-1/2"	38	48	20/60
2"	51	63	20/60

RUBBER OXYGEN/ACETYLENE HOSE

SPECIFICATION:

APPLICATION: FOR TRANSPORTATION OF WELDING GASES, INCLUDING OXYGEN, ACETYLENE, ARGON ETC

INNER TUBE: SBR BLENDED, BLACK COLOR, SMOTH

REINFORCEMENT: HIGH TENSILE STRENGTH SYNTHETIC YARN

COVER: EPDM/SBR BLENDED, WEATHER AND OZONE RESISTANT

TEMPERATURE: -20℃ TO + 60℃

COLOR:RED, BLUE, GREEN ETC

SURFACE: SMOOTH OR RIBBED

LENGTH: 25MTR, 50MTR, 100MTR OR AS PER BUYER'S REQUEST

PACKAGE: AS PER BUYER'S REQUEST



SINGLE WELDING HOSE

Popular sizes:

I.D. INCH	I.D. MM	O.D. MM	W.P./B.P. BAR
3/16"	4.8	10.5	20/60
1/4"	6.3	12	20/60
5/16"	8	15	20/60
3/8"	9.5	17	20/60
1/2"	13	21	20/60

TWIN WELDING HOSE

Popular sizes:

I.D. INCH	I.D. MM	W.P./B.P. BAR
3/16" * 3/16"	45 * 5	20/60
1/4" * 1/4"	6 * 6	20/60
5/16" * 5/16"	8 * 8	20/60
3/8" * 3/8"	10 * 10	20/60
1/4" * 5/16"	6 * 8	20/60
1/4" * 3/8"	6 * 10	20/60
5/16" * 3/8"	8 * 10	20/60

TWIN WELDING HOSE ASSEMBLIES: WITH BRASS COUPLING



Popular sizes:

3/16" x 12.5'	1/4" x 12.5'
3/16" x 25'	1/4" x 25'
3/16" x 50'	1/4" x 50'

HYDRAULIC RUBBER HOSE

SAE 100R1AT

SPECIFICATION:

TUBE: MINERAL OIL AND HYDRAULIC OIL RESISTANT NITRILE RUBBER

REINFORCEMENT: ONE SINGLE LAYER HIGH TENSILE STEEL WIRE BRAID

REINFORCEMENT.

COVER: ABRASION AND WEATHER RESISTANT SPECIAL SYNTHETIC RUBBER

TEMPERATURE: -40° C ~ +100° C (+125° C DISCONTINUOUS)

APPLICATIONS: TO DELIVER LOW-MEDIUM PRESSURE PETROLEUM AND

WATER-BASED HYDRAULIC FLUIDS SUCH AS MINERAL OIL, GLYCOL,

LUBRICATING OIL, EMULSION, HYDROCARBON ETC.



I.D. inch	I.D. mm	O.D. mm	W.P. bar	B.P. bar	Min.Bend Radius mm	LENGTH m
3/16"	4.8	12.5	207	827	89	50
1/4"	6.4	14.1	190	758	102	50
5/16"	7.9	15.7	172	689	114	50
3/8"	9.5	18.1	155	620	127	50
1/2"	12.7	21.5	138	552	178	50
5/8"	15.9	24.7	103	414	203	50
3/4"	19	28.6	86	345	241	50
7/8"	22.2	31.8	78	310	279	50
1"	25.4	36.6	69	276	305	50
1-1/4"	31.8	44.8	43	172	419	20
1-1/2"	38.1	52	34	138	508	20
2"	50.8	65.9	26	103	635	20

SAE 100R2AT

SPECIFICATION:

TUBE: MINERAL OIL AND HYDRAULIC OIL RESISTANT NITRILE RUBBER

REINFORCEMENT: TWO LAYERS OF HIGH TENSILE STEEL WIRE BRAIDS

REINFORCEMENT.

COVER: ABRASION AND WEATHER RESISTANT SPECIAL SYNTHETIC RUBBER

TEMPERATURE: -40° C ~ +100° C (+125° C DISCONTINUOUS)

APPLICATIONS: TO DELIVER LOW-MEDIUM PRESSURE PETROLEUM AND

WATER-BASED HYDRAULIC FLUIDS SUCH AS MINERAL OIL, GLYCOL,

LUBRICATING OIL, EMULSION, HYDROCARBON ETC



I.D. inch	I.D. mm	O.D. mm	W.P. bar	B.P. bar	Min.Bend Radius mm	LENGTH m
3/16"	4.8	14.1	345	1380	89	50
1/4"	6.4	15.7	345	1380	102	50
5/16"	7.9	17.3	293	1172	114	50
3/8"	9.5	19.7	276	1104	127	50
1/2"	12.7	23.1	241	964	178	50
5/8"	15.9	26.3	190	760	203	50
3/4"	19	30.2	155	620	241	50
7/8"	22.2	33.4	138	552	279	50
1"	25.4	38.9	138	552	305	50
1-1/4"	31.8	49.6	112	448	419	20
1-1/2"	38.1	56	86	344	508	20
2"	50.8	68.6	78	312	635	20

HYDRAULIC RUBBER HOSE

SPECIFICATION:

TUBE: BLACK, OIL AND HEAT RESISTANT SYNTHETIC RUBBER.

REINFORCEMENT: TWO BRAIDS OF SYNTHETIC YARN

COVER: ABRASION AND WEATHER RESISTANT SPECIAL SYNTHETIC RUBBER.

TEMPERATURE:-40° C~+100° C (+125° C DISCONTINUOUS)

APPLICATIONS: TO DELIVER LOW PRESSURE PETROLEUM AND WATER-BASED HYDRAULIC FLUIDS SUCH AS MINERAL OIL, GLYCOL, LUBRICATING OIL, EMULSION, HYDROCARBON ETC.



I.D. inch	I.D. mm	O.D. mm max	O.D. mm min	W.P. bar	B.P. bar	Min.Bend Radius mm	LENGTH m
3/16"	4.8	13.5	11.9	103	414	70	50
1/4"	6.4	15.1	13.5	86	345	76	50
5/16"	7.9	18.3	16.7	83	331	102	50
3/8"	9.5	19.8	18.3	78	310	102	50
1/2"	12.7	24.6	23	69	276	127	50
5/8"	15.9	27.8	26.2	60	240	140	50
3/4"	19	32.5	31	52	207	152	50
1"	25.4	39.3	36.9	39	155	203	50
1-1/4"	31.8	46	42.9	26	103	254	20

SAE 100R3

SPECIFICATION:

TUBE: BLACK, OIL RESISTANT SYNTHETIC RUBBER.

REINFORCEMENT: SINGLE TEXTILE FIBER BRAID WITH SPIRAL WIRE TO PREVENT COLLAPSING

COVER: ABRASION AND WEATHER RESISTANT SPECIAL SYNTHETIC RUBBER.

TEMPERATURE:-40° C~+100° C (+125° C DISCONTINUOUS)

APPLICATIONS: TO DELIVER PETROLEUM-BASED HYDRAULIC FLUIDS IN SUCTION LINES AND LOW PRESSURE RETURN LINES.



I.D. inch	I.D. mm	O.D. mm	W.P. bar	B.P. bar	Min.Bend Radius mm	LENGTH m
3/4"	19	29	21	83	127	50
1"	25.4	37.4	17	69	152	50
1-1/4"	31.8	45	14	55	203	20
1-1/2"	38.1	53	10	41	254	20
2"	50.8	62	7	28	305	20

SAE 100R4

HEBEI GOLD-DRAGON RUBBER PRODUCT MFG.



HYDRAULIC RUBBER HOSE

SAE 100R5

SPECIFICATION:

TUBE: BLACK, OIL AND HEAT RESISTANT SYNTHETIC RUBBER.

REINFORCEMENT: ONE LAYER OF STEEL WIRE BRAID REINFORCEMENT.

COVER: SLURRY IMPREGNATED SYNTHETIC YARN BRAID COVER

TEMPERATURE:-40° C~+100° C (+125° C DISCONTINUOUS)

APPLICATIONS: TO DELIVER LOW PRESSURE PETROLEUM AND WATER-BASED HYDRAULIC FLUIDS SUCH AS MINERAL OIL, GLYCOL, LUBRICATING OIL, EMULSION, HYDROCARBON ETC.



I.D. inch	I.D. mm	O.D. mm max	O.D. mm min	W.P. bar	B.P. bar	Min.Bend Radius mm	LENGTH m
3/16"	4.8	13.7	12.7	207	827	76	50
1/4"	6.4	15.3	14.3	207	827	83	50
5/16"	7.9	17.6	16.7	155	620	102	50
3/8"	9.5	20	18.9	138	552	117	50
1/2"	12.7	24	22.8	121	483	140	50
5/8"	15.9	28	26.8	103	414	165	50
7/8"	22.2	32.2	30.6	55	221	187	50
1"	25.4	39.3	36.9	43	172	229	50
1-1/8"	34.9	45.2	43.7	34	138	267	20

SPECIFICATION:

TUBE: BLACK, OIL RESISTANT SYNTHETIC RUBBER.

REINFORCEMENT: TWO LAYERS OF OF SYNTHETIC YARN BRAIDS REINFORCEMENT.

COVER: ABRASION AND WEATHER RESISTANT SPECIAL SYNTHETIC RUBBER.

TEMPERATURE:-40° C~+100° C (+125° C DISCONTINUOUS)

APPLICATIONS: TO DELIVER LOW PRESSURE PETROLEUM AND WATER-BASED HYDRAULIC FLUIDS SUCH AS MINERAL OIL, GLYCOL, LUBRICATING OIL, EMULSION, HYDROCARBON



I.D. inch	I.D. mm	O.D. mm max	O.D. mm min	W.P. bar	B.P. bar	Min.Bend Radius mm	LENGTH m
3/16"	4.8	11.9	10.3	34	138	51	50
1/4"	6.4	13.5	11.9	28	110	64	50
5/16"	7.9	15.1	13.5	28	110	76	50
3/8"	9.5	16.7	15.1	28	110	76	50
1/2"	12.7	20.6	19	28	110	102	50
5/8"	15.9	23.8	22	24	97	127	50
3/4"	19	27.8	25.4	21	83	152	50

SAE 100R6

HYDRAULIC RUBBER HOSE

RUBBER SAND BLAST HOSE

SPECIFICATION:

TUBE: NATURAL & SYNTHETIC RUBBER WITH GOOD ABRASION RESISTANT PROPERTIES

REINFORCEMENT: SYNTHETIC YARN WITH HIGH TENSILE STRENGTH & COPPER FLEX

WIRE

COVER: NATURAL RUBBER WITH GOOD AGEING & ABRASION RESISTANCE

TEMPERATURE:-40° C TO +70° C

APPLICATION: FOR CLEANING, CUTTING OR FINISHING CASTING, STONE, GLASS AND

METAL SURFACES. CONDUCTS SAND, STEEL, SHOT OR OTHER SHARP ABRASIVES

AT HIGH VELOCITY.



■ Popular sizes:

I.D. inch	I.D. mm	O.D. mm	W.P. bar	B.P. bar	LENGTH m
5/8"	15.9	32	15	60	50
3/4"	19	38	15	60	50
1"	25.4	47	15	60	50
1-1/4"	31.8	54	15	60	20/40
1-1/2"	38	60	15	60	20/40
2"	50.8	72	15	60	20/40

HOSE ASSEMBLIES



RUBBER BELT

POLYESTER CONVEYOR BELT

COMMON POLYESTER CONVEYOR BELT IS ALSO NAMED AS EP CONVEYOR BELT, AND HAS THE FEATURES OF WARP LOW ELONGATION AND EXCELLENT WEFT TROUGH FORMATION PROPERTY AS ITS TENSILE BODY IS CANVAS INTERWOVEN BY WARP TERYLENE AND WEFT POLYAMIDE, GOOD WATER RESISTANCE, UNCHANGED WET STRENGTH, NO MILDEW, AND LOWER SAFETY FACTOR AS THE INITIAL MODULUS OF POLYESTER IS HIGH, AND IS SUITABLE FOR CONVEYING MATERIALS IN MEDIUM AND LONG DISTANCE AND HIGH TRANSMISSION CAPACITY AT A HIGH SPEED.

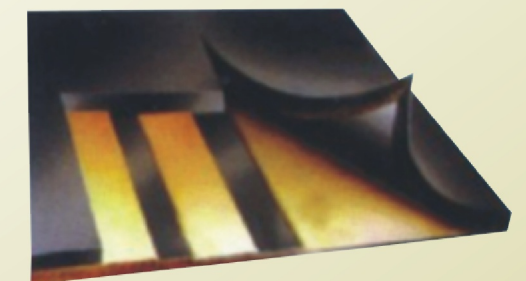


■ Specification and Technical Parameter of Polyester Multi-layer Fabric Core Conveyor Belt

Fabric Type	Fabric Textur		Fabric Model	Rubber Fabric Thickness (mm/p)	Strength Series(N/mm)					Thickness of Cover Rubber (mm)		Width Range (mm)	Belt Length (m)
	Warp	Weft			2	3	4	5	6	Upper Cover Rubber	Lower Cover Rubber		
					layer	layer	layer	layer	layer				
Polyester (EP)	Polyester (EP)	Polyester (EP)	EP-80	0.6	160	240	320	400	480	2.0~8	0~4.5	400~1800	≤300
			EP-100	0.75	200	300	400	500	600			400~1800	
			EP-150	1.00	300	450	600	7500	900			400~1800	
			EP-200	1.1	400	600	8000	1000	1200			500~1800	
			EP-250	1.25	500	750	1000	1250	1500			500~1800	
			EP-300	1.35	600	900	1200	1500	1800			500~1800	
			EP-350	1.45		1025	1600	1750	2100			800~1800	
			EP-400	1.55			2000	2000	2400	1000~1800			
			EP-500	1.7				2500	3000	1000~1800			

OIL-RESISTANCE CONVEYOR BELT

THE PRODUCT IS PRODUCED BY THE CALENDARING, FORMATION, VULCANIZATION AND THE LIKE TO ALL-COTTON CANVAS, NYLON CANVAS AND POLYESTER CANVAS, AND IS SUITABLE FOR CONVEYING OILY MATERIALS.



TECHNICAL INDEX

- ON THE BASIS OF COVER RUBBER PERFORMANCE, THE OIL-RESISTANCE CONVEYOR BELT IS CLASSIFIED INTO TWO TYPES OF WEAR RESISTANCE TYPE (D) AND COMMON TYPE (L)
- ON THE BASIS OF OIL RESISTANCE PERFORMANCE, IT CAN BE CLASSIFIED INTO TWO GRADES OF Y1 AND Y2.

RUBBER BELT

NYLON IS THE BEST IN THE COMPOSITE FIBERS USED IN THE RUBBER INDUSTRY, IS OF A STRUCTURE BRAIDED BY NYLON FIBERS IN WARP AND WEFT, AND HAS THE WIDEST APPLICATION, WITH OUTSTANDING ADVANTAGES OF EXCELLENT WEAR RESISTANCE, HIGH STRENGTH AND GOOD FATIGUE RESISTANCE. THE CONVEYOR BELT MADE FROM NYLON CANVAS IS FEATURED BY THIN BELT BODY, HIGH STRENGTH, IMPACT RESISTANCE, GOOD TROUGH FORMATION PROPERTY, LARGE BONDING FORCE AMONG LAYERS, EXCELLENT FLEXIBILITY AND LONG SERVICE LIFE, IS SUITABLE FOR CONVEYING MATERIALS IN MEDIUM AND LONG DISTANCE AND HIGH TRANSMISSION CAPACITY AT A HIGH SPEED, AND IS WIDELY APPLICABLE TO SUCH DEPARTMENTS AS MINES, METALLURGY, CONSTRUCTION, PORTS AND THE LIKE.

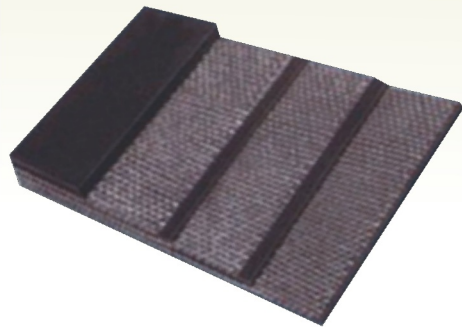
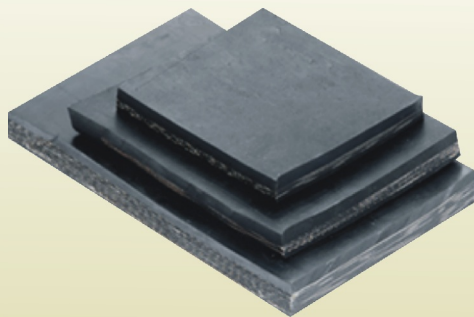
■ Specification and Technical Parameter of Nylon Multi-layer Fabric Core Conveyor Belt

Fabric Type	Fabric Textur		Fabric Model	Rubber Fabric Thickness (mm/p)	Strength Series(N/mm)					Thickness of		Width Range (mm)	Belt Length (m)
	Warp	Welt			2	3	4	5	6	Cover Rubber (mm)			
					layer	layer	layer	layer	layer	Upper Cover Rubber	Lower Cover Rubber		
Nylon	Polyamide (N)	Polyamide (N)	NN-100	0.75	200	300	400	500	600	1.5~8	0~4.5	400~1800	≤300
			NN-150	0.8	300	450	600	7500	900			400~1800	
			NN-200	0.9	400	600	800	1000	1200			500~1800	
			NN-250	1.15	500	750	1000	1250	1500			500~1800	
			NN-300	1.25		900	1200	1500	1800			500~1800	
			NN-400	1.45			1600	2000	2400			800~1800	
			NN-500	1.55			2000	2500	3000			800~1800	

ALL-COTTON OR POLYESTER COTTON CONVEYOR BELT

COTTON CANVAS STRUCTURE IS SPUN BY WARP AND WEFT COTTON FIBERS, WITH LOWER ELONGATION, GOOD MECHANICAL CLAMPING FASTENING AND GOOD ADHESIVE PROPERTY TO RUBBER. IT IS SLIGHTLY DEFORMED AT HIGH TEMPERATURE, AND IS SUITABLE FOR PLACES WITH SHORTER DISTANCE AND LESS TRANSMISSION CAPACITY. THE POLYESTER COTTON CONVEYOR BELT IS THE UPGRADING OF THE ALL-COTTON CONVEYOR BELT, HAS SUPERIOR PHYSICAL AND MECHANICAL PROPERTIES TO THE ALL-COTTON CONVEYOR BELT BECAUSE ITS TENSILE BODY IS INTERWOVEN BY WARP POLYESTER COTTON FIBERS AND WARP COTTON FIBERS, HAS EXCELLENT USE PERFORMANCE AS THE BELT IS MUCH THINNER AND LIGHTER, AND THE IMPACT RESISTANCE IS GREATLY IMPROVED, CAN SAVE ENERGY AND REDUCE WASTES, CAN CREATE FAVORABLE ECONOMIC BENEFITS FOR USERS, AND IS SUITABLE FOR MATERIAL CONVEYANCE IN MEDIUM AND SHORT DISTANCE AND MODERATE LOAD.

NYLON CONVEYOR BELT



HEBEI GOLD-DRAGON RUBBER PRODUCT MFG.

RUBBER BELT

HIGH-TEMPERATURE RESISTANCE CONVEYOR BELT

THIS PRODUCT IS PRODUCED BY THE VULCANIZATION AND THE LIKE TO COMPOUND POLYESTER CANVAS WITH HIGH MODULUS, LOW SHRINKAGE AND EXTREMELY HIGH BREAKING STRENGTH AS THE BELT CORE, AND ETHYLENE PROPYLENE DIENE METHYLENE RUBBER OR BUTYL CHLORIDE RUBBER WITH EXCELLENT HIGH-TEMPERATURE RESISTANCE AS THE COVER RUBBER WITH HIGH-TEMPERATURE RESISTANCE MATERIALS. AFTER SPECIAL LIGHT FINALIZED TREATMENT, THE BELT CORE HAS HIGH BONDING STRENGTH, SMALL ELONGATION STRAIN AND EXCELLENT WEAR PROPERTY UNDER THE NORMAL USE CONDITIONS AT A TEMPERATURE BELOW 180 °C . THE CONVEYOR BELT CAN WITHSTAND A TEMPERATURE AS HIGH AS 250 °C IN A SHORTER TIME, AND IS SUITABLE FOR SUCH INDUSTRIES AS CEMENT, COKING, METALLURGY, IRON AND STEEL, ETC.



■ Specification and Technical Parameter of High-temperature Resistance Conveyor Belt

Fabric Type	Fabric Model	Strength Series(N/mm)					Thickness of		Width Range (mm)	Belt Length (m)
		2	3	4	5	6	Cover Rubber (mm)			
		layer	layer	layer	layer	layer	Upper Cover Rubber	Lower Cover Rubber		
Polyester (EP)	EP80	160	240	320	400	480	4.5~10	0~4.5	400~1800	≤300
	EP100	200	300	400	500	600				
	EP150	300	450	600	750	900				
	EP200	400	600	800	1000	1200				
	EP250	500	750	1000	1250	1500				
	EP300	600	900	1200	1500	1800				
	EP400	800	1200	1600	2000	2400				
EP500	1000	1500	2000	2500	3000					



RUBBER BUCKERT



Model No. 5600
Capacity 18L



Model No. 5602
Capacity 11.5L



Model No. 5604
Capacity 30L



Model No. 5601
Capacity 10L



Model No. 5603
Capacity 37L



Model No. 5605
Capacity 16L

RUBBER BUCKERT



Model No. 5606
Capacity 40L



Model No. 5608
Capacity 40L



Model No. 5613
Capacity 12L



Model No. 5607
Capacity 85L



Model No. 5609
Capacity 21L



Model No. 5614
Capacity 13L

RUBBER BUCKERT



Model No. 5615
Capacity 16L



Model No. 5620
Capacity 8L



Model No. 5622
Capacity 9L



Model No. 5623
Capacity 10L



Model No. 5630
Capacity 10L



Model No. 5631
Capacity 10L



Model No. 5637
Capacity 12/9.5/8L



Model No. 5638
Capacity 14L



Model No. 5639
Capacity 12L

PLASTIC BUCKERT



Model No. 12003
Capacity 8L



Model No. 12004
Capacity 14L



Model No. 12005
Capacity 25L



Model No. 12006
Capacity 30L



Model No. 12007
Capacity 32L



Model No. 12008
Capacity 43L



Model No. 12009
Capacity 45L



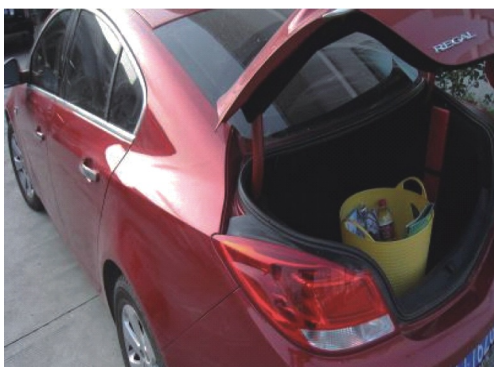
Model No. 12010
Capacity 52L

PLASTIC BUCKERT

APPLY:

FLEXIBLE PLASTIC BUCKETS . THE TUBS HAVE A EXTENSIVE PURPOSE. IN HOUSES IT CAN BE USED AS GROCERY SHOPPING BARRELS, VEGETABLES BARRELS, STORAGE BARRELS, INCORPORATED BARRELS, PET BARRELS, WASHING BUCKETS, FISHING BARRELS AND SO ON. AS A TOOL BARRELS, WATERING BUCKETS AND FRUIT BUCKETS ETC IN GARDENS. IN THE WORKSHOP IT CAN ALSO SERVE AS TURNOVER BARRELS AND STORAGE BUCKET ETC. THE FEATURE AND GENERAL USING PHOTOGRAPH OF THE PRODUCT AS FOLLOWS,

1. LIGHT WEIGHT, SPACE SAVING, CONVENIENCE CARRYING.
2. GOOD FLEXIBILITY,
BREAKING AND FOLDING RESISTANT AND ENVIRONMENTAL PROTECTION.
3. WATERPROOF ANTI-ULTRAVIOLET RADIATION



NOTE:

This image shows a blank sheet of white paper designed for handwriting practice. It contains fifteen horizontal blue dashed lines spaced evenly down the page. In the bottom right corner, there is a dark brown, wavy-shaped graphic element that resembles a piece of land or a decorative flourish.